

Supporting both Desktops, and Servers in App-V

So you're running RES Powerfuse, Microsoft App-V, Windows XP/Vista and Windows Server?

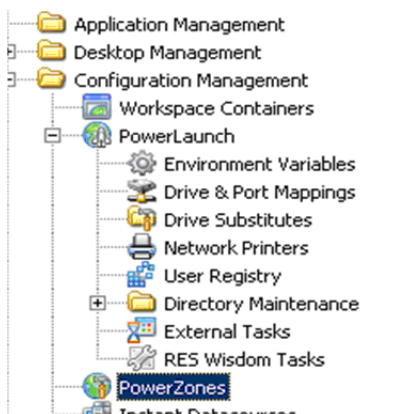
When I'll be referring to App-V, I'll be talking about version 4.1 – I'm not sure, if this will work on 4.5. Let me know in a comment ☺

Instead of having to install in the same directory in the desktop- and the server version of App-V, you can do an environment variable, which can handle the install path.

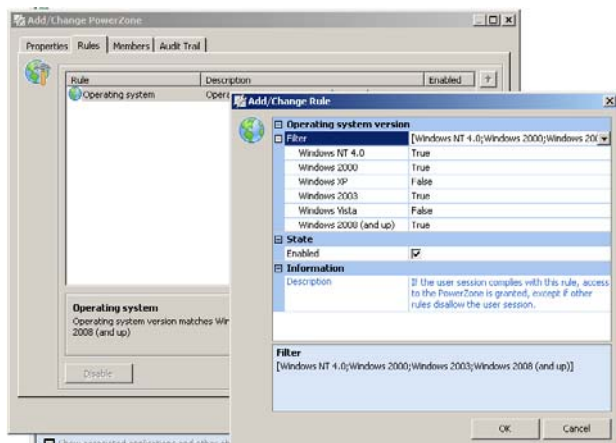
What will I gain from this? You only need to maintain one application, instead of two.

Perhaps this sounds obvious to some – perhaps it's advanced to others.

So let's begin.....



Find PowerZones under “Configuration Management”. Create a PowerZone to determine, if it the OS is a server, or a workstation.

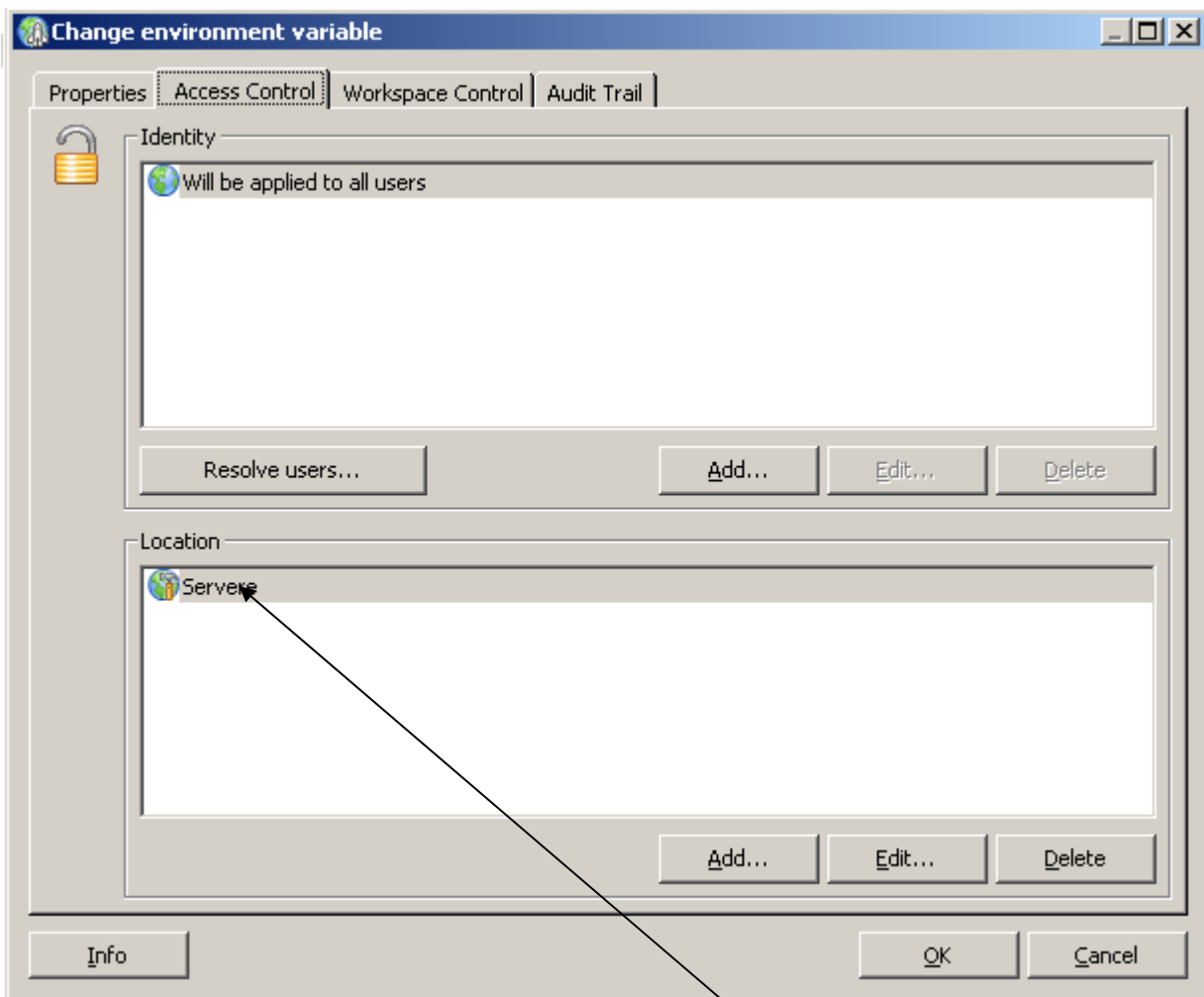
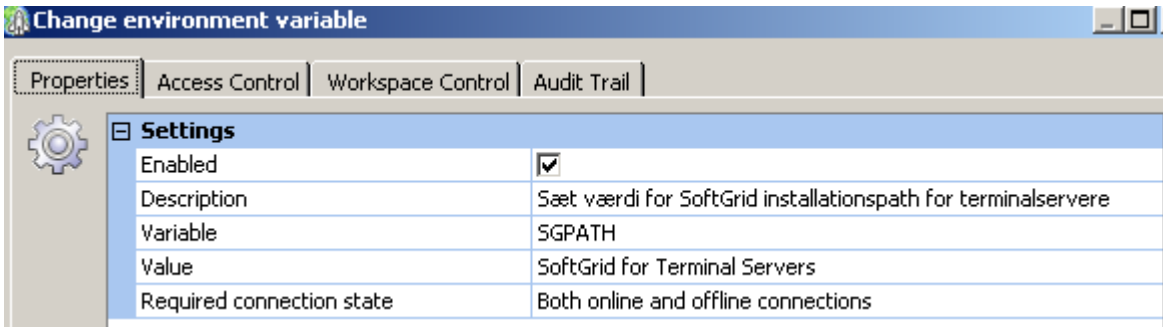


This is just an example of how we determine a server (we only have Windows 2003 SR2, and therefore no Windows 2000 servers):

Create the same things for Workstations.



Find "Environment Variables" under PowerLaunch.

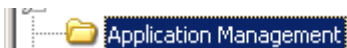


Create an environment variable with the above information. In location you'll chose, the PowerZone you've just created.

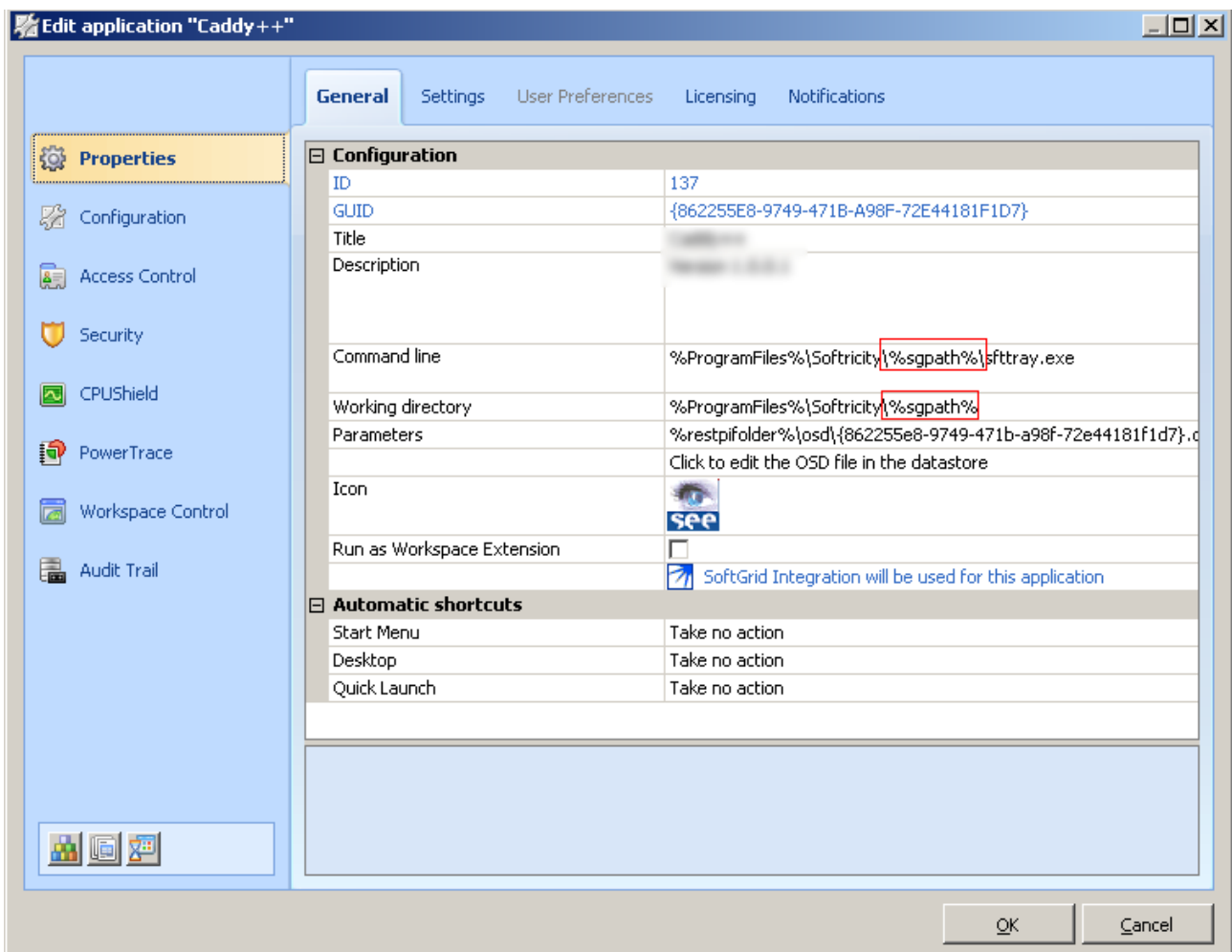
Settings	
Enabled	<input checked="" type="checkbox"/>
Description	Sæt værdi for SoftGrid installationspath for workstations
Variable	SGPATH
Value	SoftGrid for Windows Desktops
Required connection state	Both online and offline connections

Do the same thing with workstations, with the above information in the environment variable.

So now you're ready to put it all into action.



Go to "Application Management", and create a new application – or change an existing App-V application.



Notice, that we're using %sgpath% in the commandline, and working directory.

That's it! Try it out – and let us know, what you think in the comments on RESguru.com.